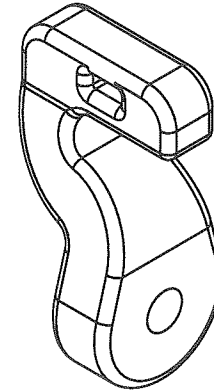
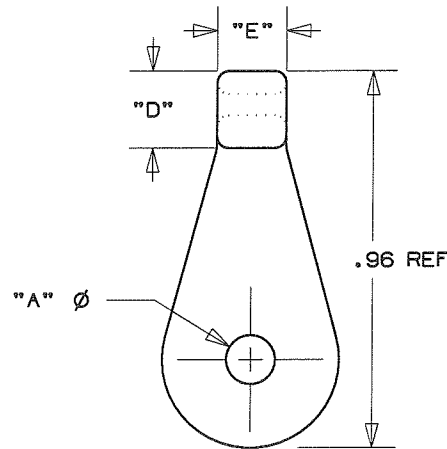
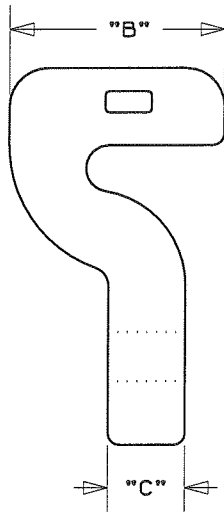


THIS COPY IS PROVIDED ON A RESTRICTED BASIS AND IS NOT TO BE USED IN ANY WAY DETRIMENTAL TO THE INTERESTS OF PANDUIT CORP.

PANDUIT PART NUMBER*	"A" DIA.	"B"	"C"	"D"	"E"	FOR USE WITH THE FOLLOWING PANDUIT CABLE TIES	WEIGHT lbs/100 pcs (g)/100 pcs
LHMSC-S5-	.125 .135	.56	.20	.20	.18	M = MINATURE	.273 (124)



NOTES:

- SEE CURRENT PRICE SHEET FOR PART NUMBER SUFFIX DESIGNATION FOR PACKAGE SIZE.

DIMENSIONS IN BRACKETS ARE METRIC [mm]	
CAD FILENAME/LAYERS G03672BA_DC_GB0239NW/OOB	
TINLEY PARK, ILLINOIS LHMSC-S5 ANCHOR - LIGHTENING HOLE	
UNLESS OTHERWISE SPECIFIED, DIMENSIONAL TOLERANCES ARE: (.X) ±0.05 (1.3) (.XXX) ±0.010 (0.25) (.XX) ±0.02 (0.5) ANGLES ±5°	UNLESS OTHERWISE SPECIFIED, ALL DIMENSIONS ARE GIVEN IN INCHES, THIRD ANGLE PROJECTION.
DRAWN BY TMSA	MAT'L: NYLON 6/6 NATURAL
DATE 01-12-09	SCALE 2:1
CHK'D KLN	DRAWING NO. GB0239NW
	DWG SIZE A

REV	DATE	BY	CHK	DESCRIPTION	ECN	R	CUST	SUP
OOB	04/24/09	GDH	RP	.96 REF WAS: .98 REF, UPDATED PRODUCT WEIGHT	GB0239NW	OOB	KLN	
R	1-12-09	TMSA		INITIAL RELEASE	GB0239NW	R		